



29-116 kW

YTMH/YTMH-K SERIES

Semi-Cylindrical – Serpentine Piping - 3 Pass

Central System Air Heating Boiler (YTMH)

Central System Drying Boiler (YTMH-K)

USAGE AREAS

Vegetable and Fruit Drying, Bay Leaf,

Offal and Pallet Drying

Greenhouse, Poultry House and

Factory Heating

FUEL TYPES

Natural Gas, Diesel, LPG

TECHNICAL DATA >>>

YTMH/YTMH-K SERIES • 232-1162 kW

Semi-Cylindrical – Serpentine Piping – 3 Pass System Air Heater



YTMH / YTMH-K SERIES • 232-1162 kW

Efficiency and quality increase significantly in properly heated greenhouses.



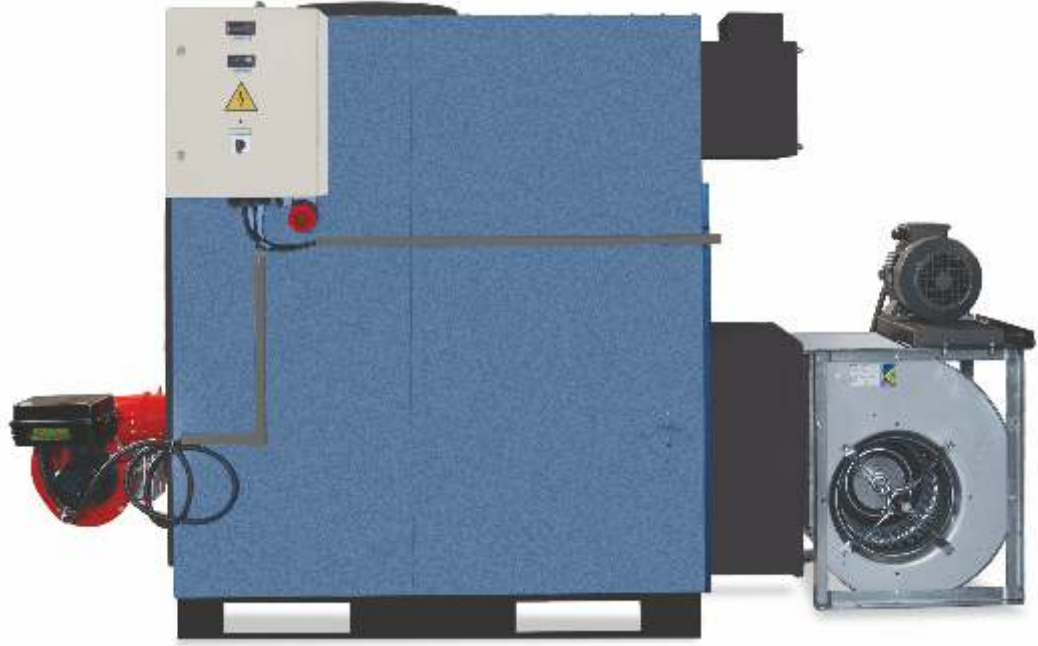
DIESEL



NATURAL GAS



LPG



RADIAL FAN



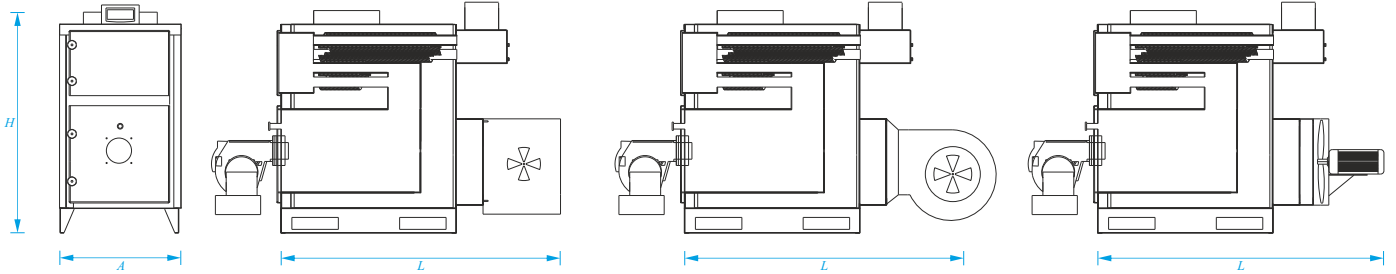
SNAIL FAN



AXIAL FAN

It is produced with a RADIAL FAN as standard. SNAIL by area of use you can choose AXIAL FAN.

- YTMH hot air boilers run on diesel fuel and natural gas. The desired burner type must be specified on the order. Specially designed serpentine heating pipes provide high efficiency and fuel savings.
- YTMH boilers are suitable for heating of cafés, restaurants, factories, greenhouses, chicken coops, etc. Boilers are available with COIL and AXIAL FAN OPTIONS.
- The materials in panels of our boilers are provided by international brands and replacements can be easily procured in case of any malfunction.
- The sensors in the panels of our boilers allow monitoring of ambient temperature and allow fuel savings.
- Optionally, our boiler can run on 100% ambient air or on clean air in the desired ratio.
- Optionally, our boiler can run on 100% clean air or on ambient air in the desired ratio.
- YTMH-K hot air boilers are designed for drying of walnut, cotton, laurel, offal, olive, fruits, vegetables, etc.
- YTMH-K series boilers keeps ambient values in the drying space fixed at set points with the humidity panel, the damper motor and the moisture extraction fans.
- The materials in panels of YTMH-K series boilers are provided by international brands and replacements can be easily procured in case of any malfunction.



| DIMENSIONS | | | YTMH - YTMH-K | | | | | | | | | | |
|----------------------|------------|----|---------------|-----|-------|-----|-------|-------|-------|-------|-------|-------|------|
| | | | 100 | 150 | 200 | 250 | 300 | 350 | 400 | 500 | 600 | 800 | 1000 |
| YTMH Radyal Fan | Length (L) | mm | - | | | | | | | | 3.450 | 3.525 | |
| YTPMHS Salyangoz Fan | Length (L) | mm | 2.965 | | 3.135 | | 3.230 | | 3.360 | | 3.700 | 3.870 | |
| YTMHA Aksiyel Fan | Length (L) | mm | 2.120 | | 2.220 | | | - | | | | | |
| YTMH Fansız Uzunluk | Length (L) | mm | | | 1.700 | | | 1.830 | | 2.130 | | 2.500 | |
| Genişlik (A) | mm | mm | 1.050 | | 1.120 | | | | | | 1.370 | | |
| Yükseklik (H) | mm | mm | | | 1.670 | | | | 1.820 | | 2.310 | | |

| TECHNICAL DATA | | | YTMH - YTMH-K | | | | | | | | | | |
|-------------------------|-------------|-------------------|----------------------------|---------|---------|---------|-----------|---------|-------------|---------|---------|---------|----------|
| | | | 100 | 150 | 200 | 250 | 300 | 350 | 400 | 500 | 600 | 800 | 1000 |
| Fuel Type | | | Natural Gas - LPG - Diesel | | | | | | | | | | |
| Heating Power | | kW | 115 | 179 | 232 | 290 | 348 | 406 | 465 | 581 | 697 | 930 | 1162 |
| | | Kcal | 100.000 | 150.000 | 200.000 | 250.000 | 300.000 | 350.000 | 400.000 | 500.000 | 600.000 | 800.000 | 1000.000 |
| Burn Chamber Height Ø | | mm | 553 | 634 | | | | 705 | | 905 | 2 x Ø80 | | |
| Burn Chamber Depth L | | mm | 1.000 | | | 1.180 | | 1.400 | | 1.500 | | | |
| Yanma Odası Hacmi | | dm ³ | 240 | 275 | | 324 | | 428 | | 589 | | | |
| Yanma Odası Basıncı | | mbar | 0.9 | | 1.1 | | 1.9 | | 2 | | | | |
| Axial Fan | Flow Rate | m ³ /h | 10.000 | 11.000 | | 18.000 | | - | | | | | |
| | Motor Power | kw/h | 1.50 | | 3.00 | | - | | | | | | |
| | Tank Weight | kg | 600 | 670 | 682 | 678 | 750 | - | | | | | |
| Helix Fan | Flow Rate | m ³ /h | 11.500 | 12.000 | | 20.000 | | 22.500 | 26.600 | - | | | |
| | Motor Power | kw/h | 3.00 | 4.00 | | 5.50 | | 7.50 | - | | | | |
| | Tank Weight | kg | 620 | 690 | 698 | 705 | 770 | 880 | 885 | 998 | - | | |
| Radial (Nicotra) | Flow Rate | m ³ /h | - | | | | | | 18.50 | | 22.00 | | |
| | Motor Power | kw/h | - | | | | | | 39.000 | | 58.000 | | |
| | Tank Weight | kg | - | | | | | | 1.520 | | 3.735 | | |
| Temperature Range | | °C | | | | | | | 40 - 85 | | | | |
| Flue Diameter | | mm | 170 x 310 | | | | 270 x 470 | | 400 x 400 | | | | |
| Maximum Air Temperature | | °C | | | | | | | 120 | | | | |
| Power Connection | | V/Hz | | | | | | | 380V - 50Hz | | | | |





**Bahçelievler, Bağımsızlık Cd. No:18
35875 • Torbalı, İzmir, Türkiye**

+90 232 462 35 15 • +90 232 486 12 18
+90 533 479 51 27



Technical Support

servis@yagmurteknik.com
+90 534 052 40 34



export@yagmurteknik.com
www.yagmurteknik.com



export@yagmurteknik.com
www.yagmurteknik.com



yağmur teknik

let the expert do the job